



"Powering Progress with Precision."

"Our high-performance range of 11KV insulators and transformer bushings is engineered to ensure safe, durable, and efficient power transmission and distribution across utility and industrial networks."

**COMPANY PROFILE,
PRODUCT DETAILS, CLIENTS**

COMPANY PROFILE 2025



S & T ELECTRIC



www.stelectricpk.com





We offer a comprehensive range of high-quality insulators and transformer bushings designed for reliable performance in power transmission and distribution systems.

About Company

S&T Electric has been the name of quality since the company established in 2016 in the field of engineering items specially Manufacturing Porcelain Insulators for Electricity Department.



Our Team

Our team is the main reason of success of the company which acts like a back bone of the organization consist of professionals, engineers and qualified technical people which make familiar that we deliver quality product which qualify the all technical specifications as per requirements of our customer or of the international standards.



Why Choose S&T Electric?

Quality-First Manufacturing:

Precision-crafted insulators using advanced techniques and stringent QC processes.

Experienced Team:

Engineers and technicians with deep expertise in insulation and power system requirements.

On-Time Delivery:

Trusted by clients for timely project support and consistent supply chain performance.

Customer-Focused:

We partner closely with electricity departments to deliver tailored and dependable solutions.



Vision & Mission



Company Vision

"To be a globally recognized leader in the electric product industry, known for quality, innovation, and integrity—empowering communities and industries with efficient, safe, and sustainable energy solutions."



Company Mission

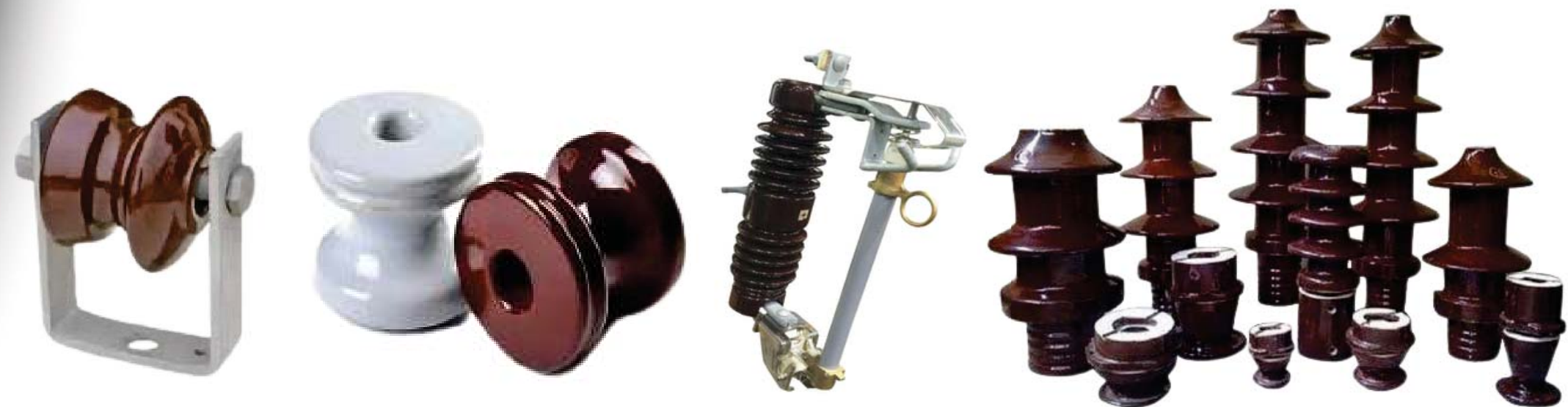
"To engineer and deliver high-quality, reliable, and innovative electric products that power progress, support infrastructure, and contribute to a more sustainable and energy-efficient future. We are committed to customer satisfaction, product excellence, and continuous improvement through advanced technology and dedicated service."

OUR PRODUCTS

The goal of the company is not only to produce the better product but also to built up a good relationship with our customer.

PRODUCTS:

- 11 KV Disc Insulators
- 11 KV Pin Insulators
- 11 KV & 33 KV Pin Insulator Normal and Fog Type
- Cutout Insulators
- 11 KV Post Insulators
- Transformers Bushing For LT & HT
- Spool Insulators
- Shackle Insulators

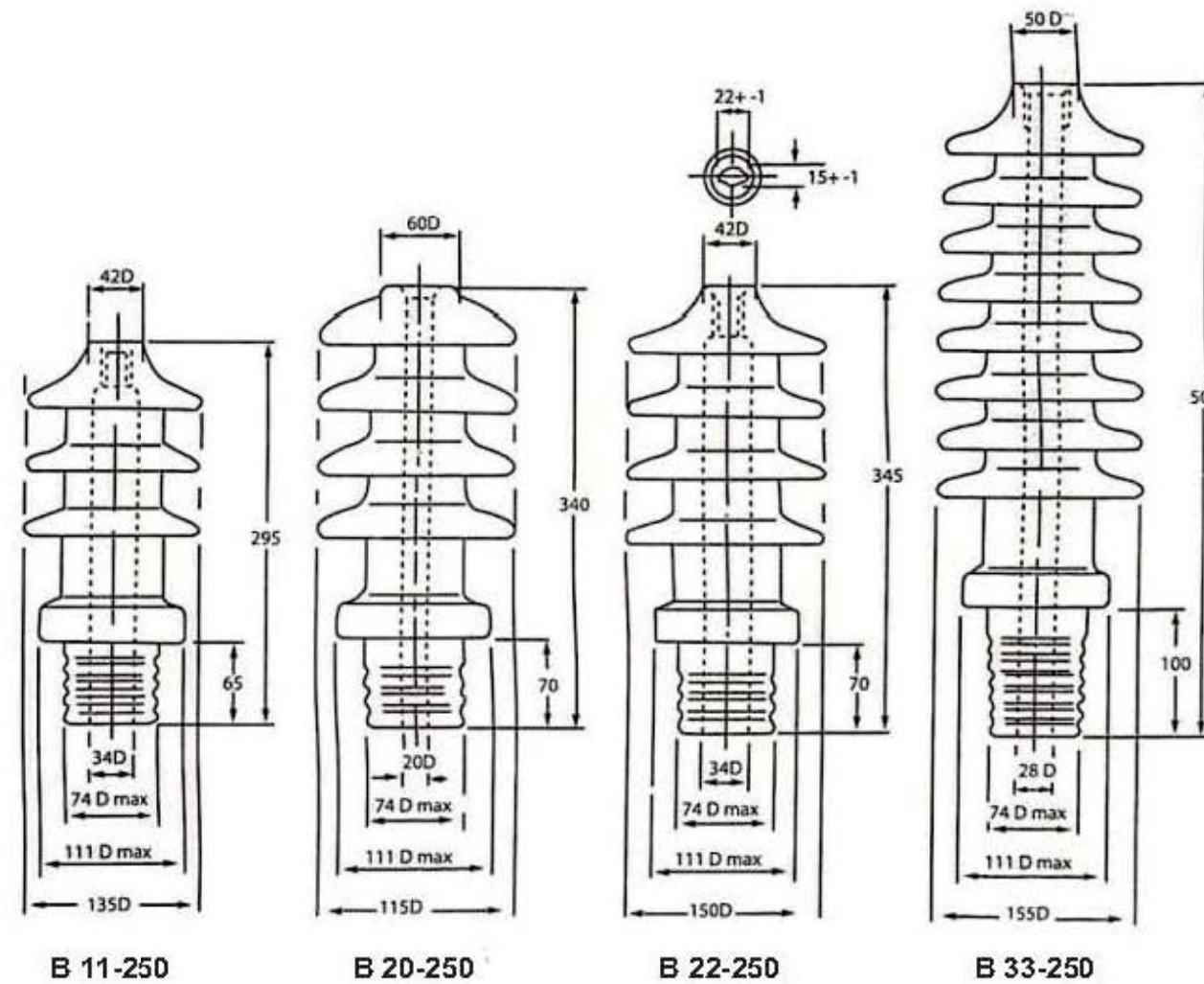


OUR PRODUCTS



PRODUCT DRAWINGS - 1

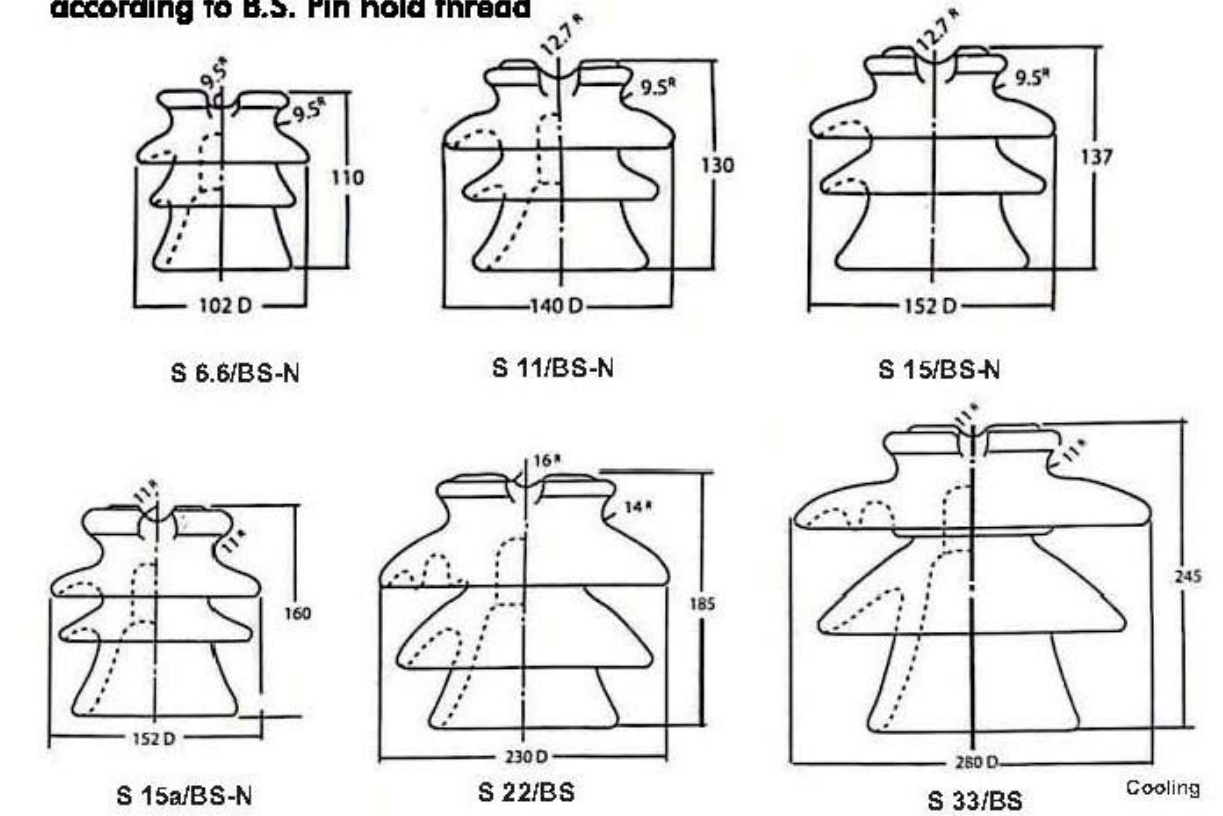
High Voltage Transformer Bushings



CAT. NO.		B 11 - 250	20 - 250	B 22 - 250	B 33 - 250
Voltage Rating	kV	11	20	22	33
Leakage distance	mm	355	508	500	900
Impulse Withstand	kV	75	125	125	170
Weight per Piece	kg	3.25	5.04	4.45	9.17

Pin Type Insulators B.S. Standard Type

With Cemented Zinc thimbles
according to B.S. Pin hold thread



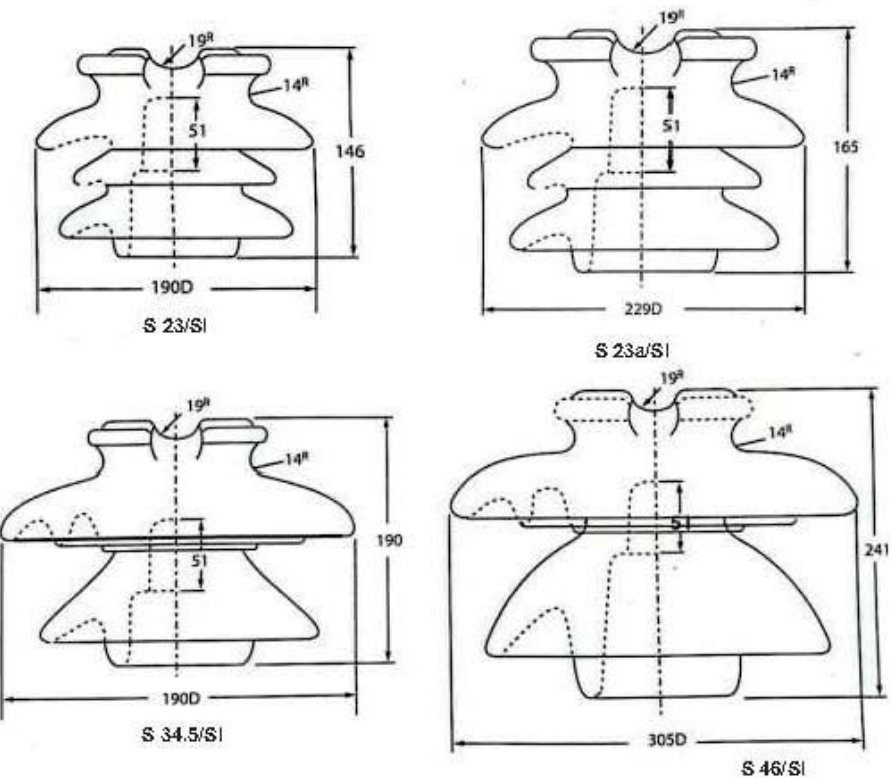
CAT. NO.		S 6.6/BS-N	S 11/BS-N	S 15/BS-N	S 15a/BS-N	S 22/BS	S 33/BS
Voltage Rating	kV	6.6	11	15	15	22	33
Total Creepage Distance	kV	178	254	298	330	570	698
Protected Creepage Distance	mm	76	102	133	150	311	381
Recommended Pin Height	mm	127	152	165	216	216	280
Compressive Strength	mm	11	11	11	11	13	11
Power Frequency Flashover Dry	kV	60	75	80	95	115	130
Power Frequency Flashover Wet	kV	35	50	55	60	75	95
50 % Impulse Flashover Positive	kV	95	115	130	120	180	215
50 % Impulse Flashover Negative	kV	120	150	175	150	240	290
Power Frequency Withstand Dry	kV	50	65	70	70	100	115
Power Frequency Withstand Wet	kV	30	45	50	50	70	90
Impulse Withstand	kV	75	95	110	95	150	200
Power Frequency Puncture Voltage	kV	95	150	150	130	200	210
Radio-Influence Test Voltage to Ground	kV	10	15	15	15	22	30
Voltage Data Maximum RIV AT 1000 KHz	Uv	50	100	100	100	100	200
Dimension of Pin Head		Large Steel Head					
Weight Per Piece	kg	0.85	1.65	2.00	2.50	5.60	10.00

Testing Specifications: B.S. 137 Part 1-1982

PRODUCT DRAWINGS - 2

High Voltage Pin Type Insulators

ANSI Standard Type
These Insulators have 1-3/8 inch, Diameter threaded
Zinc thimbles which are cemented into Pin hole Cavity

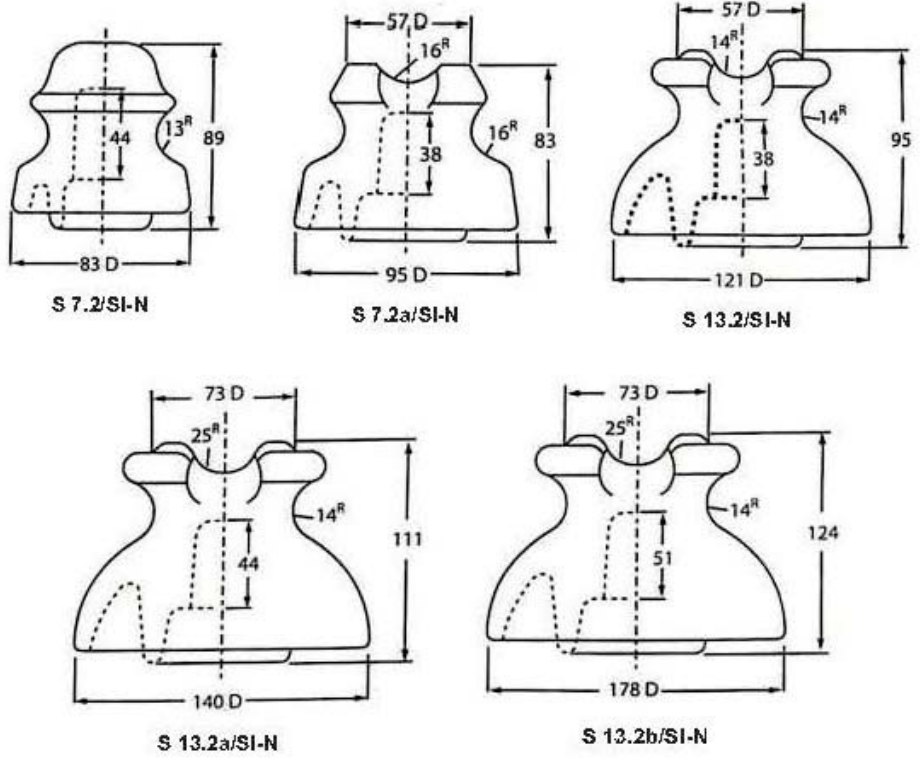


CAT. NO.			S 23/SI	S 23 a/SI	S 34.5/SI	S 46/SI
ANSI CLASS			56-1	56-2	56-3	56-4
Voltage Rating (.S Prractice)		kV	23	23	34.5	46
Leakage Distance		mm	330	432	533	696
Dry Arcing Distance		mm	178	210	241	286
Minimum Pin Height		mm	152	178	203	254
Cantil ver Strength		kN	11	13	13	13
Average Flashover Voltage	Low Frequency Dry	kV	95	110	125	140
	Low Frequency Wet	kV	60	70	80	95
	Criti al Impulse PPositive	kV	150	175	200	225
	Criti al Impulse Negaate	kV	190	225	265	310
	Low Frequency Puncture Voltage	kV	130	145	165	185
Radio-Influence Voltage Data	Test Voltage to Ground	kV	15	22	30	30
	Maximum RIV AT 1000 KHz	UV	100	100	200	200
Weight Per Piece		kg	3.60	5.90	8.20	10.90

Standard Specification: ANSI C29.2-1992
Zinc Sleeve can be provided on request

Low & Medium Voltage Pin Type Insulators

ANSI Standard TYPE
These Insulators have Porcelain thread Pin hole of
ANSI 1 Inch Diameter

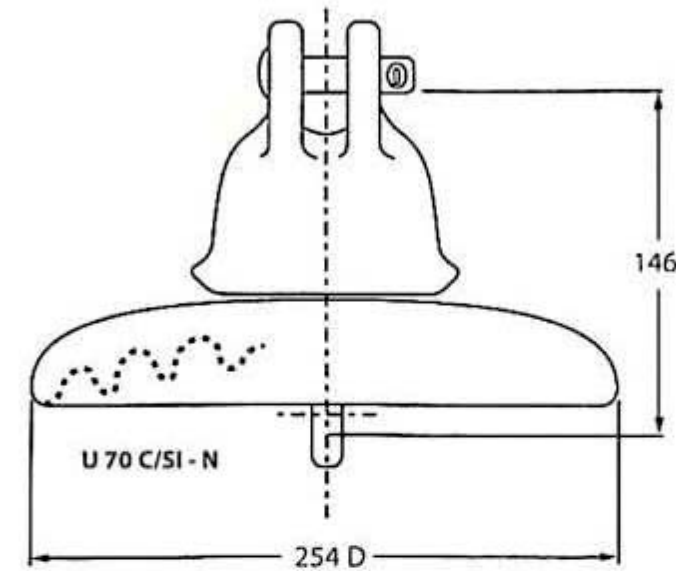


CAT. NO.			S 7.2/SI-N	S 7.2a/SI-N	S 13.2/SI-N	S 13.2a/SI-N	S 13.2b/SI-N
ANSI CLASS			55-1	55-2	55-3	55-4	55-5
Voltage Rating (.S Prractice)		kV	7.2 (or below)	7.2 (or below)	13.2	13.2	13.2
Leakage Distance		mm	102	102	178	229	305
Dry Arcing Distance		mm	57	57	114	127	159
Minimum Pin Height		mm	102	102	127	127	152
Cantil ver Strength		kN	13	11	11	13	13
Average Flashover Voltage	Low Frequency Dry	kV	35	45	55	65	80
	Low Frequency Wet	kV	20	25	30	35	45
	Criti al Impulse PPositive	kV	50	70	90	105	130
	Criti al Impulse Negaate	kV	70	85	110	130	150
	Low Frequency Puncture Voltage	kV	50	70	90	95	115
Radio-Influence Voltage Data	Test Voltage to Ground	kV	5	5	10	10	15
	Maximum RIV AT 1000 KHz	UV	50	50	50	50	100
Weight Per Piece		kg	0.55	0.58	1.00	1.70	3.00

Standard Specification: ANSI C29.5-1984

PRODUCT DRAWINGS – 3

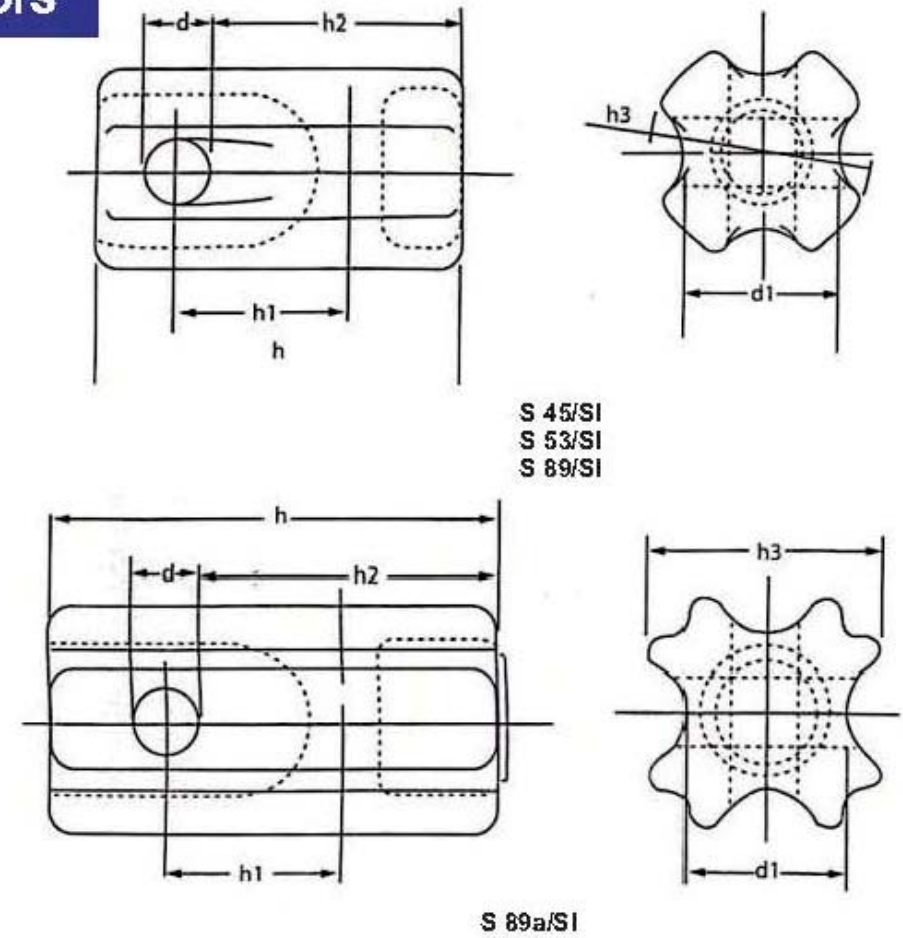
Suspension Insulators ANSI Tongue & Clevis Type



CAT. NO.			S 70 C/SI-N
ANSI CLASS			52-4
Porcelain Disc Diameter		mm	254
Unit Spacing		mm	146
Leakage Distance		mm	292
Combined M & E Strength		kN	70
Mechanical Impact Strength		N-m	6
Tension Proof Test Load		kN	35
Average Flashover Voltage	Low Frequency Dry	kV	80
	Low Frequency Wet	kV	50
	Critical Impulse Positive	kV	125
	Critical Impulse Negative	kV	130
Low Frequency Puncture Voltage		kV	110
Radio-Influence Voltage Data	Test Voltage to Ground	kV	10
	Maximum RIV AT 1000 KHz	UV	50
Weight Per Piece		kg	5.45

Standard Specification: ANSI C29.2-1992
Zinc Sleeve can be provided on request

Strain Insulators ANSI Standard Type



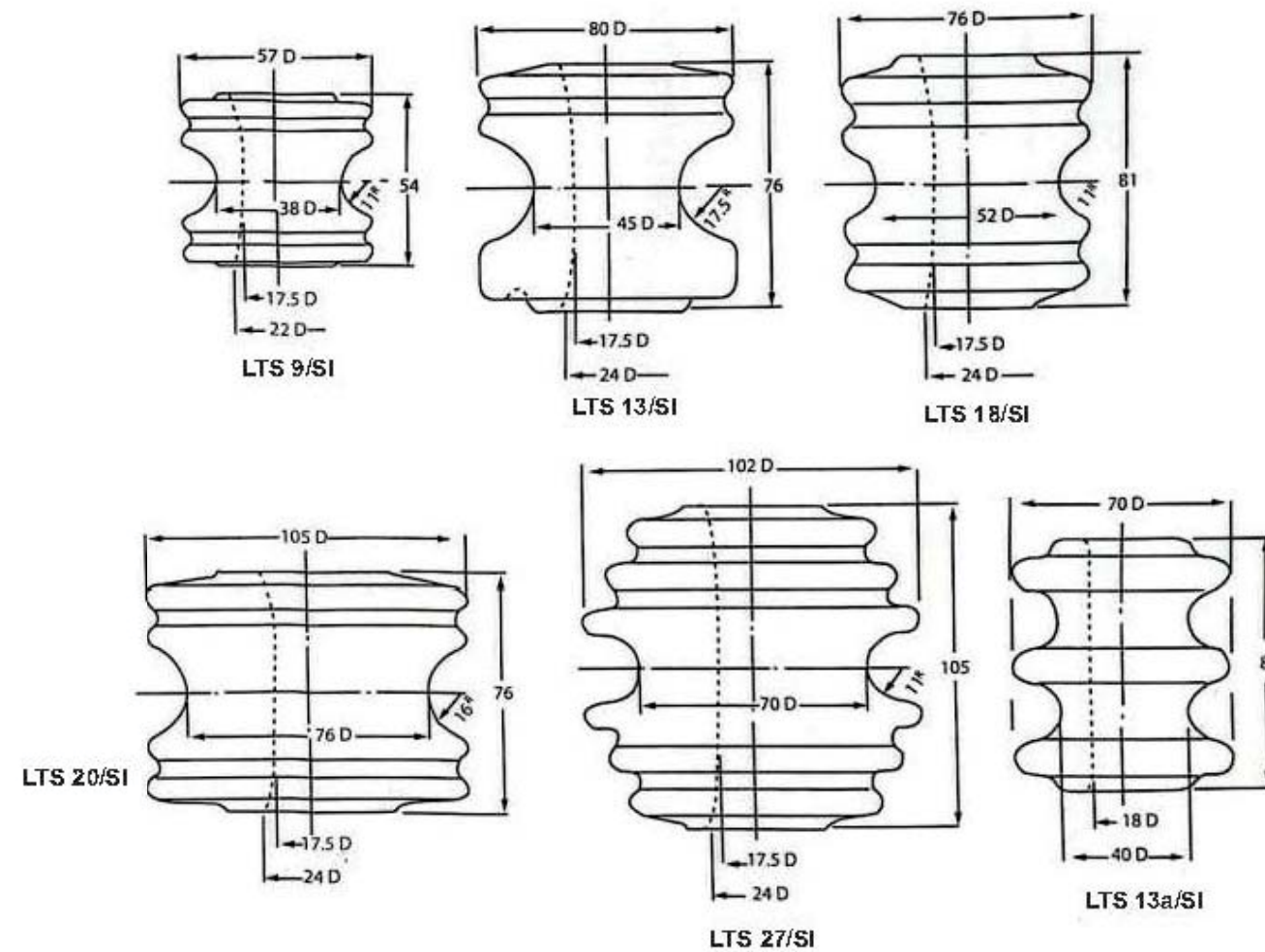
CAT. NO.			S 45/SI	S 53/SI	S 89/SI	S 89a/SI
Transverse Strength			54-1	54-2	54-3	54-4
Tensile Strength		kN	45	53	89	89
Average Flashover Voltage	Low Frequency Dry	kV	25	30	35	40
	Low Frequency Wet	kV	12	15	18	23
Leakage Distance		mm	41	48	57	76
Dimensions	d	mm	16	22	25.4	25.4
	d1	mm	45	54	60	60
	h	mm	89	108	140	171
	h1	mm	45	57	79	67
	h2 max:	mm	64	76	103	114
	h3	mm	64D	73D	86D	89
Weight Per Piece		kg	0.43	0.74	1.23	2.10

Testing Specifications: ANSI C 29.4-1989

PRODUCT DRAWINGS - 4

Spool Insulators

ANSI Standard Type

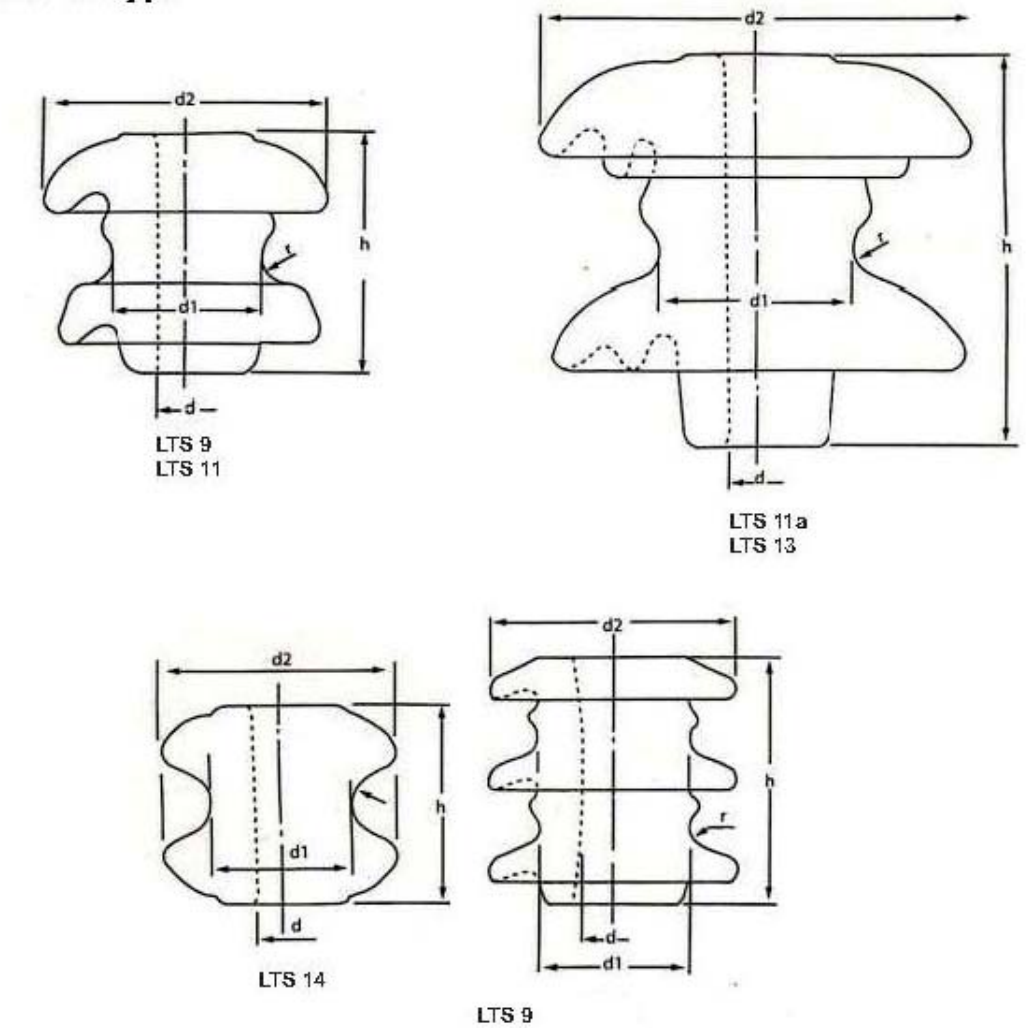


CAT. NO.				ITS 9/SI	ITS 13/SI	ITS 18/SI	ITS 20/SI	ITS 27/SI	ITS 13a/SI
ANSI Class				53.1	53.2	53.3	53.4	53.5	-
Transverse Strength			kN	9	13	18	20	27	13
Average	Low Frequency Dry		kV	20	25	25	25	35	25
Flashover Voltage	Low Frequency Wet	Vertical	kV	8	12	12	12	18	15
		Horizontal	kV	10	15	15	15	25	-
Weight Per Piece			kg	0.22	0.48	0.50	1.00	1.20	0.35

Standard Specification: ANSI C29.3-1986

Shackle Insulators

ANSI Standard Type



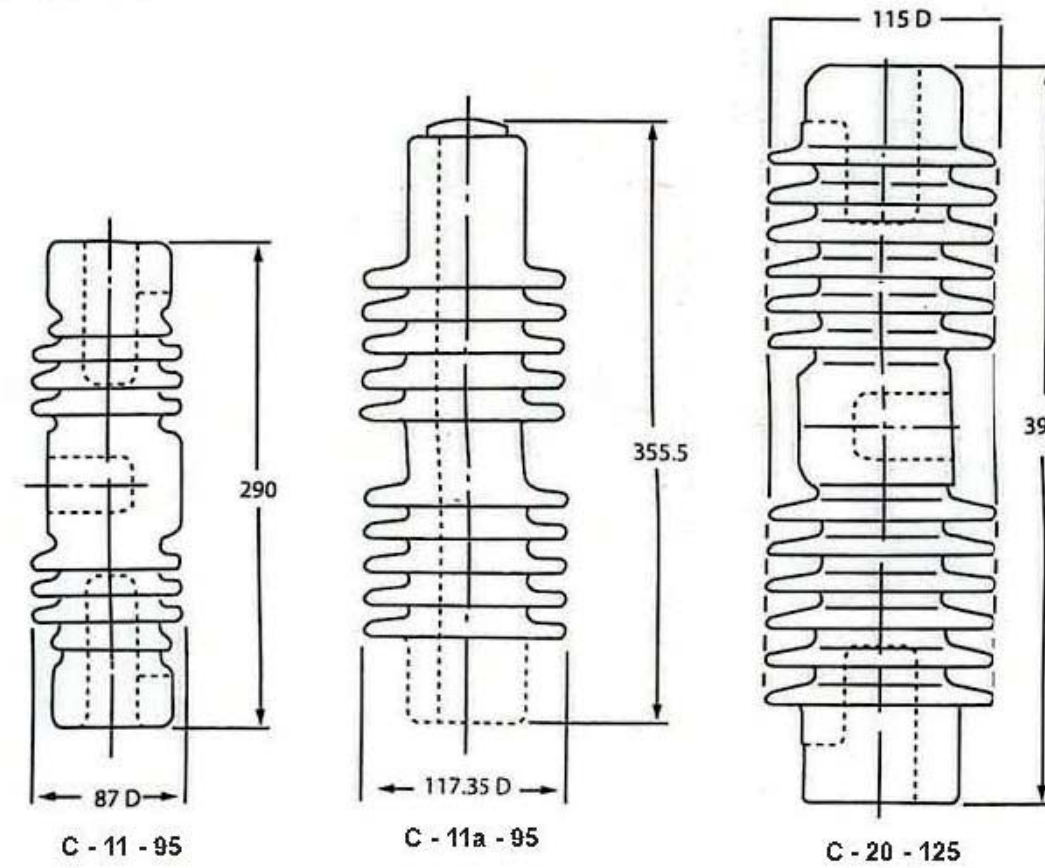
CAT. NO.			LTS 9	LTS 11	LTS 11a	LTS 13	LTS 14	LTS 13a
Transverse Strength		kN	9	11	11	13	14	13
Average Flashover Voltage	Low Frequency Dry	kV	15	25	30	40	17	28
	Low Frequency Wet	kV	8	13	17	24	9	15
Leakage Distance		mm	51	64	95	127	-	60
Dimensions	d	mm	17.5	17.5	20.5	20.5	17.0	22
	d1	mm	32	49	54	64	47	50
	d2	mm	63	89	114	140	76	80
	r	mm	4.8	9.5	12.7	11	9	6.5
	h	mm	51	76	102	127	65	80
Weight Per Piece		kg	0.20	0.52	0.95	1.70	0.47	0.42

Testing Specifications: ANSI C 29.1-1988

PRODUCT DRAWINGS - 5

Dropout Cutout Insulators

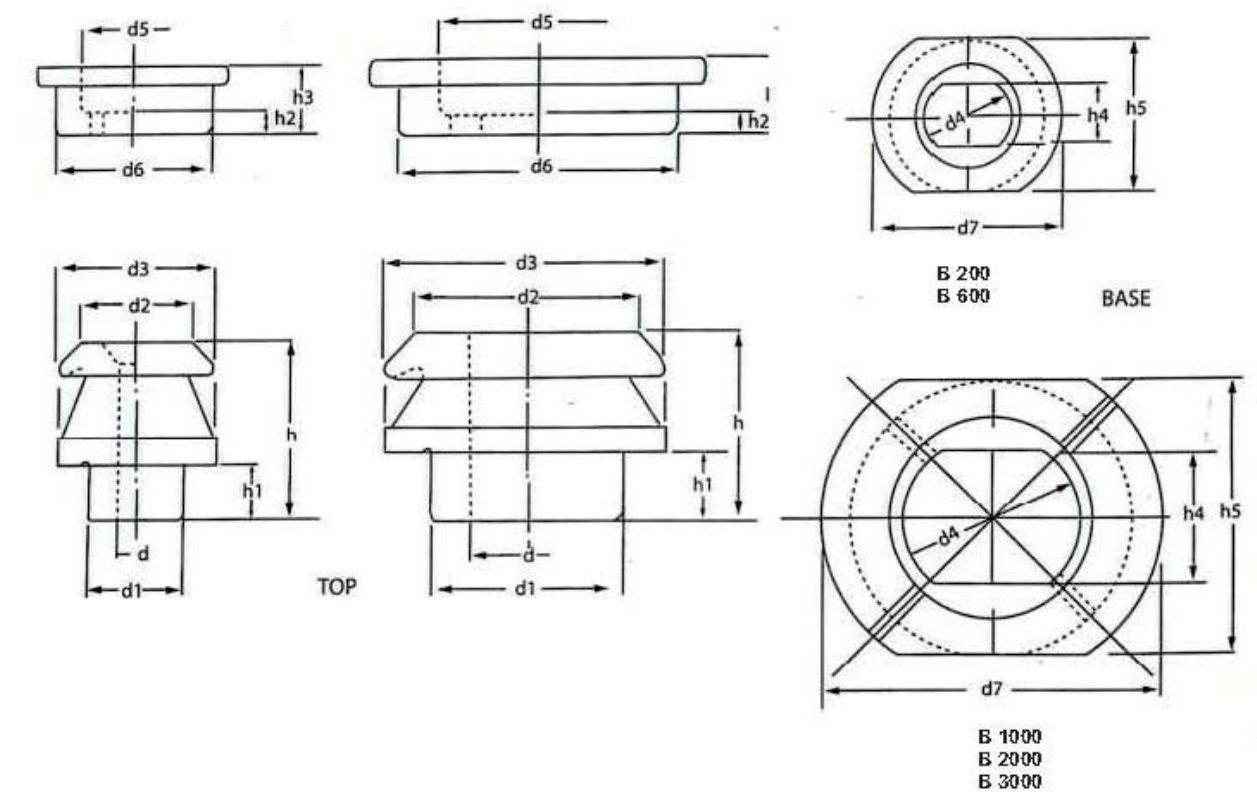
Outdoor Type



CAT. NO.		C 11 - 95	C 11a - 95	C 20 - 125
Leakage distance	mm	155	305	400
Dry Arcing Distance	mm	95	155	160
Compressive Strength	kN	6	6	2
Power Frequency Flashover Dry	kV	70	70	-
Power Frequency Flashover Wet	kV	40	40	-
Dry One Minute Power Frequency Withstand	kV	65	65	55
Wet One Minute Power Frequency Withstand	kV	35	35	40
Impulse Withstand	kV	95	95	125
Weight Per Piece	kg	2.70	4.00	4.90

Low Voltage

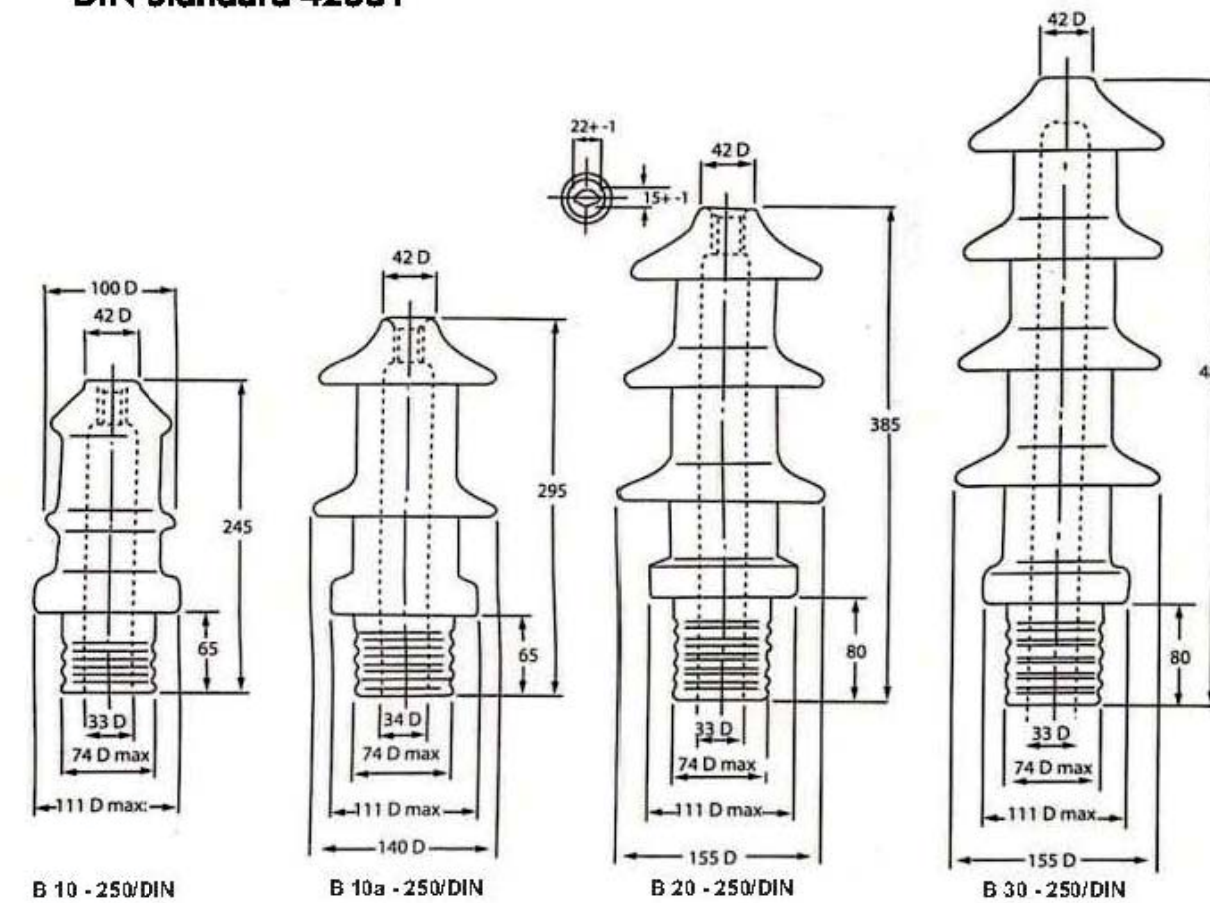
Transformer Bushings



CAT. NO.	Rating Amps	Dimensions														Weight Per Set Kg
		Top						Base								
		d min: mm	d1 min: mm	d2 mm	d3 mm	h max: mm	h1 max: mm	d4 mm	d5 mm	d6 mm	d7 mm	h2 mm	h3 min: mm	h4 min: mm	h5 mm	
B 200	200	14	27	42	55	70	25	26	30	50	60	10	30	20	50	0.26
B 600	600	22	43	48	70	80	25	41	46	70	85	10	30	28	70	0.54
B 1000	1000	32	53	66	90	85	30	46	57	90	100	10	35	37	90	0.92
B 2000	2000	44	66	80	104	85	30	64	70	104	125	10	35	51	104	1.14
B 3000	3000	50	86	100	125	85	30	80	90	125	150	10	35	61	125	1.91

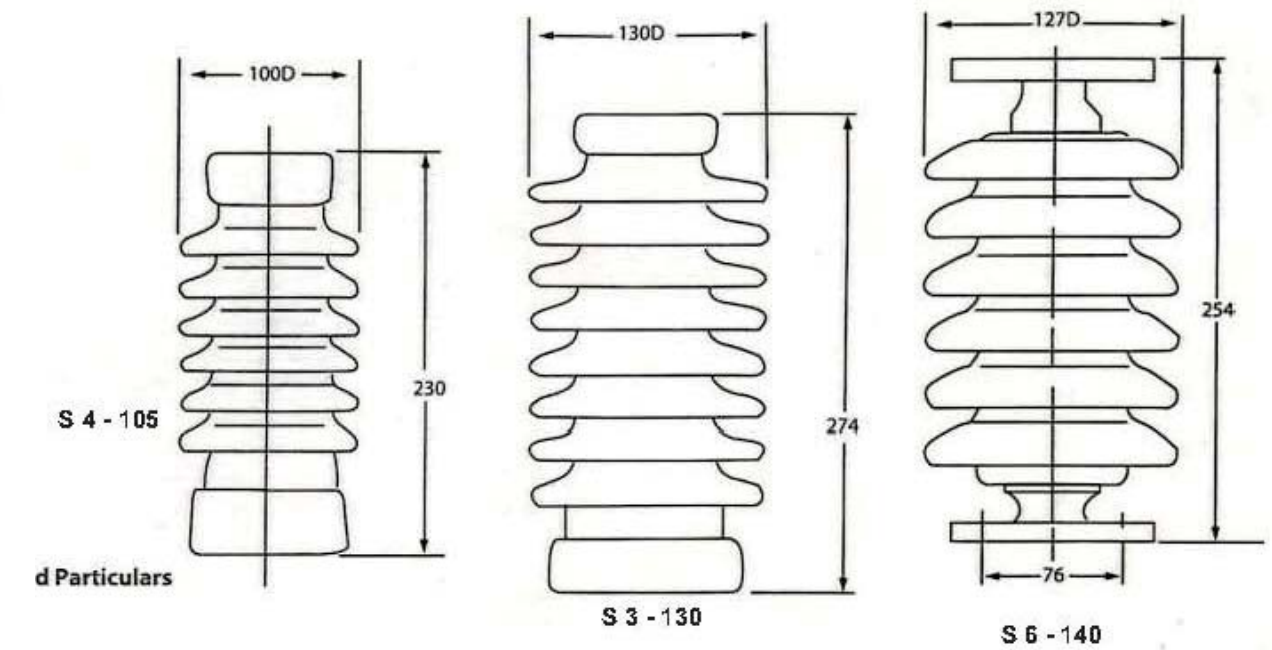
High Voltage Transformer Bushings

DIN Standard 42531



CAT. NO.		B 10 - 250/DIN	B 10a - 250/DIN	B 20 - 250/DIN	B 30 - 250/DIN
DIN Ref		10 NI 250	10 Nf 250	20 Nf 250	30 Nf 250
Voltage Rating	kV	10	10	20	30
Leakage distance	mm	180	290	445	600
Impulse Withstand	kV	60	75	125	170
Weight per Piece	kg	2.40	3.05	5.00	6.30

Support Insulators



CAT. NO.		S 4 - 105	S 3 - 130	S 6 - 140
Voltage Rating	kV	11	20	11
Leakage distance	mm	335	508	450
Dry Arcing Distance	mm	170	232	229
Compressive Strength	kN	4	3	6
Tensile Strength	kN	10	8	11
Compression Strength	kN	53	53	53
Power Frequency Flashover Dry	kV	85	110	85
Power Frequency Flashover Wet	kV	55	70	55
Critical Impulse Flashover Positive	kV	115	155	170
Critical Impulse Flashover Negative	kV	140	175	195
Power Frequency Withstand Dry	kV	70	90	70
Power Frequency Withstand Wet	kV	45	60	50
Impulse Withstand	kV	105	130	140
Weight Per Piece	kg	3.50	5.40	4.75

Testing Specifications: C Pub: 273 - 1990

QUALITY CERTIFICATION:

QUALITY CERTIFICATION:

We are consciously and active engaged in conducting detailed analysis of all the variables for every product. Starting from the raw materials, which came from approved suppliers of repute, till the product reach the customer, our In house quality management system ensures that the quality policy is observed at every step, right from procurement of raw material to delivery of reliable and safe components and products. As a quality conscious company, we are committed to meet with all national and International standards in our processes, production, human resource, supply chain management.



45001:2018



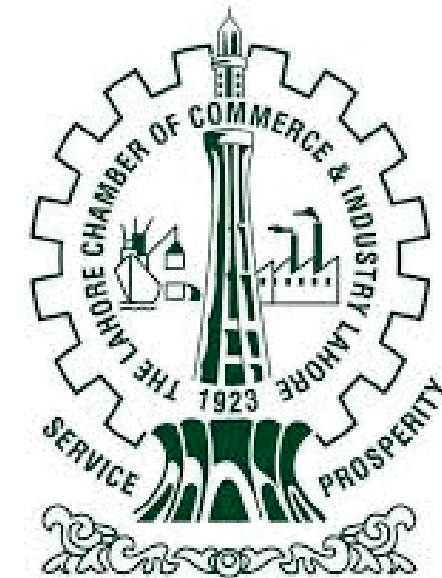
9001:2015



ISO 14001:2015

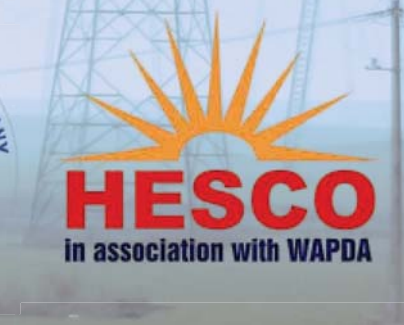
REGISTRATIONS

Federal Board of Revenue (FBR)
Lahore Electric Supply Company Limited (LESCO)
ISO Certified (ISO 9001:2015 / ISO 14001:2015 / ISO 45001:2018)
Lahore Chamber of Commerce & Industry (LCCI)



OUR CLIENTS

- Lahore Electric Supply Company Limited (LESCO)
- Faisalabad Electric Supply Company Limited (FESCO)
- Gujranwala Electric Power Company Limited (GEPCO)
- Multan Electric Power Company Limited (MEPCO)
- Islamabad Electric Supply Company Limited (IESCO)
- Peshawar Electric Supply Company Limited (PESCO)
- Tribal Area Electric Supply Company Limited (TESCO)
- Sukkur Electric Power Company Limited (SEPCO)
- Hyderabad Electric Supply Company Limited (HESCO)
- Quetta Electric Supply Company Limited (QESCO)
- A. J&K Electricity Department (AJ&K ED)
- K. Electric Karachi (KE)



"Empowering Our Clients, Energizing the Future."

Contact Us



+92-315-4011-767



www.stelectricpk.com



info@stelectricpk.com
stelectric92@gmail.com



Office : 16-E, Temple Road, 2nd Floor,
Khawaja Chamber, Mehta Street,
Opposite Ramzan Eye Hospital,
Lahore.

Factory: 2.5-Km, Pattoki Road Near
Kot Gama Chunian Cantt, Distt.
Kasur.





Thank You

VISIT US:



S&T ELECTRIC

www.stelectricpk.com

